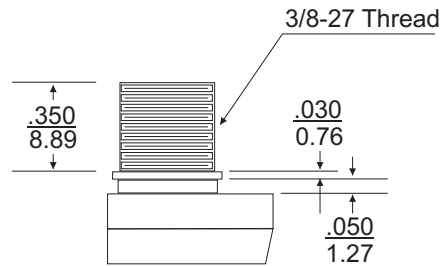
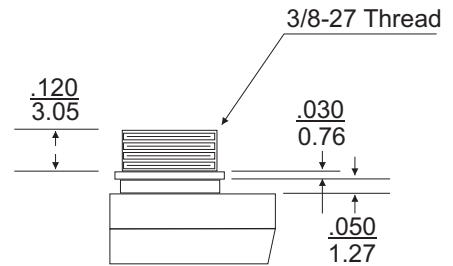


Push Button Choices (select your preference for sections 1-5)

1. Body Style

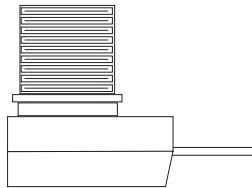


A Body
(Tall Body)

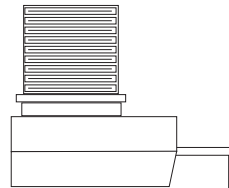


B Body
(Short Body)

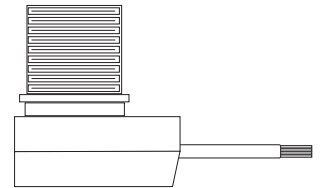
2. Terminal/Wire Style



Straight
Terminals



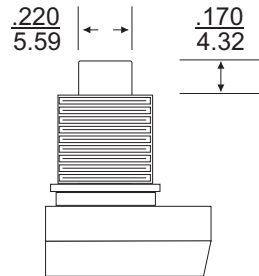
90° Bent
Terminals



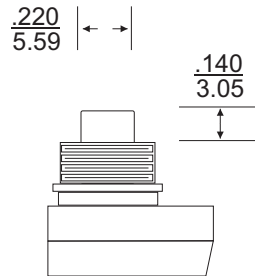
Wires

*Female Plug-In Terminals also available

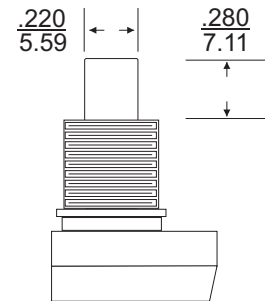
3. Actuator Style



P1 Plunger
(A Body)



P1 Plunger
(B Body)



P2 Plunger
(A Body Only)

4. Switch Function

On-Off **NOMC** **NCMO** **On-On**
(Momentary On) (Momentary Off)

On1-Off-On2 **On1-On1&2-On2-On1&2**

5. UL Required

Yes **No**